

87°30'0"E

87°45'0"E

88°0'0"E

88°15'0"E

DISTRICT EAST MIDNAPORE HYDROGEOLOGICAL MAP

22°30'0"N

22°30'0"N

22°15'0"N

22°15'0"N

22°0'0"N

22°0'0"N

21°45'0"N

21°45'0"N

21°30'0"N

21°30'0"N

21°15'0"N

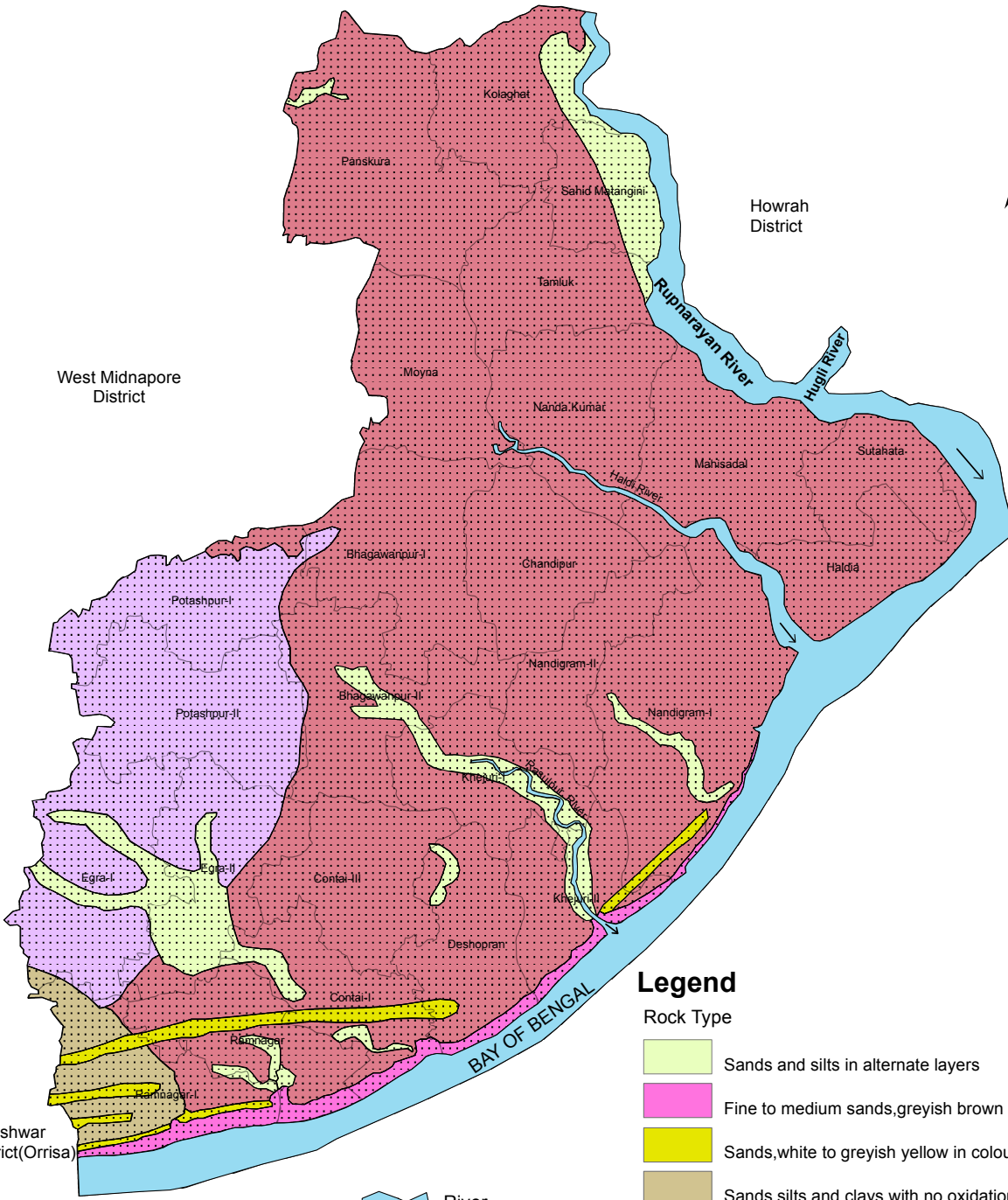
21°15'0"N



West Midnapore District





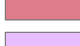

Howrah District

Baleshwar District (Orissa)



Legend

Rock Type

-  Sands and silts in alternate layers
-  Fine to medium sands, greyish brown in colour
-  Sands, white to greyish yellow in colour, well sorted
-  Sands, silts and clays with no oxidation
-  Sands with silts, clays, associated with Fe-nodules
-  Greenish grey clay, impregnated with caliche nodules

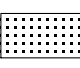
 River

 District Boundary

 Block Boundary

0 2.5 5 10 15 20
Kilometers

Projection & Geodetic Reference System: GCS, WGS 1984

Symbol	Rock Type	Age	Lithology	Aquifer Description	Hydrogeology
	Unconsolidated sand, silts and clay with caliche nodules	Upper Pleistocene to Holocene	Younger and mature deltaic plain paradeltaic fan surface, coastal plain, new aged flood plain	Upper aquifer within 120m b.g.l. is brackish. Potential fresh aquifer is below 120m b.g.l. Aquifer is under confined condition	Low duty to heavy duty tubewells are feasible. The yield prospect is 91-200 cum/hr

Reference: CGWB & GSI

87°30'0"E

87°45'0"E

88°0'0"E

88°15'0"E