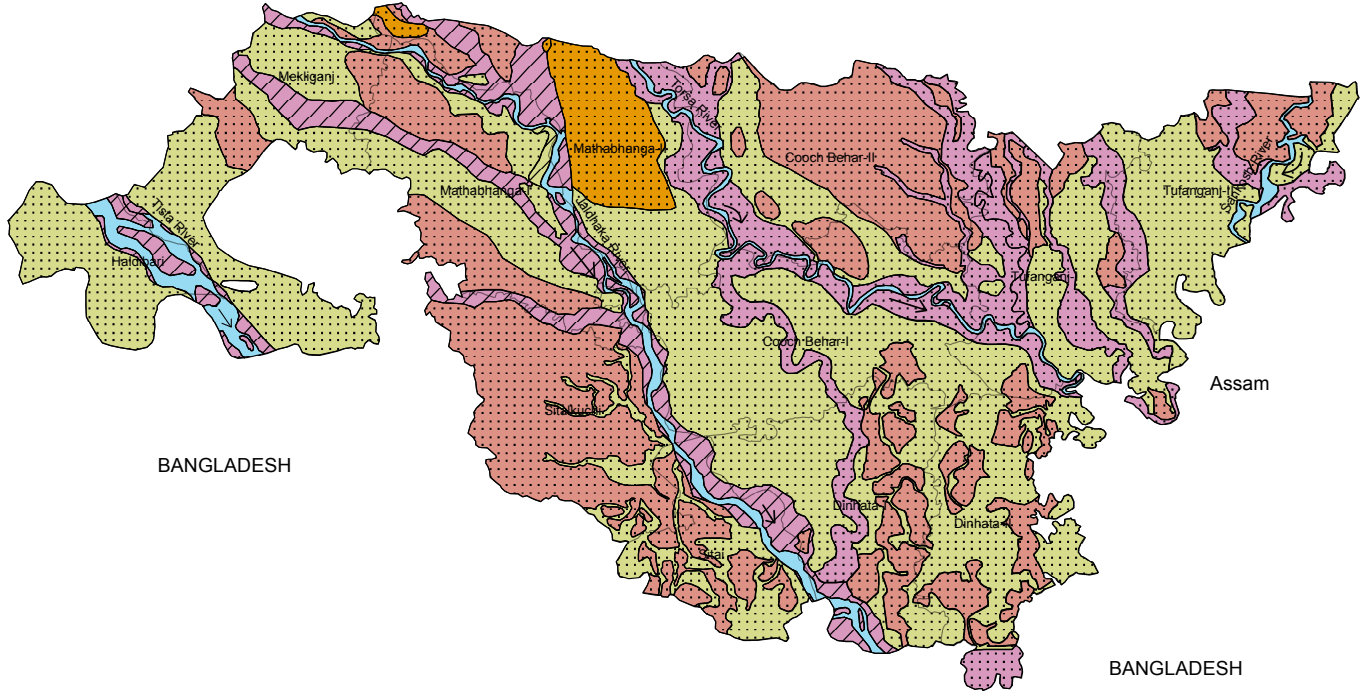


DISTRICT KOCH BIHAR HYDROGEOLOGICAL MAP

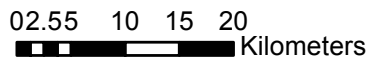


Jalpaiguri District



Legend

- River
- District Boundary
- Block Boundary
- Rock Type**
- Very fine sand, silt and clay
- Alternate layers of sand, silt and clay
- Light grey silt loams, fine sand, silt and clay
- Gravel, coarse to fine sand, silt and clay



Projection & Geodetic Reference System: GCS, WGS 1984

Symbol	Rock Type	Age	Lithology	Aquifer Description	Hydrogeology
	Coarse to fine sand, silt and clay, light grey silty loams and gravel	Upper Pleistocene to lower Holocene	Piedmont cut and fill coalescing lower fan terraces alluvium fans	Fairly thick regionally extensive confined-unconfined aquifers from 2 to 300m b.g.l.	Large yield prospect above 150 cum/hr, direction of ground water towards south east
	Very fine sand, silt and clay	Holocene	Present day flood plain, low lying plains of very fine sand, silt and clay	Fairly thick regionally extensive confined-unconfined aquifers from 2 to 300m b.g.l.	Large yield prospect above 150 cum/hr, direction of ground water towards south east

Reference: CGWB & GSI