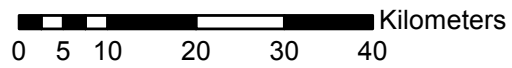
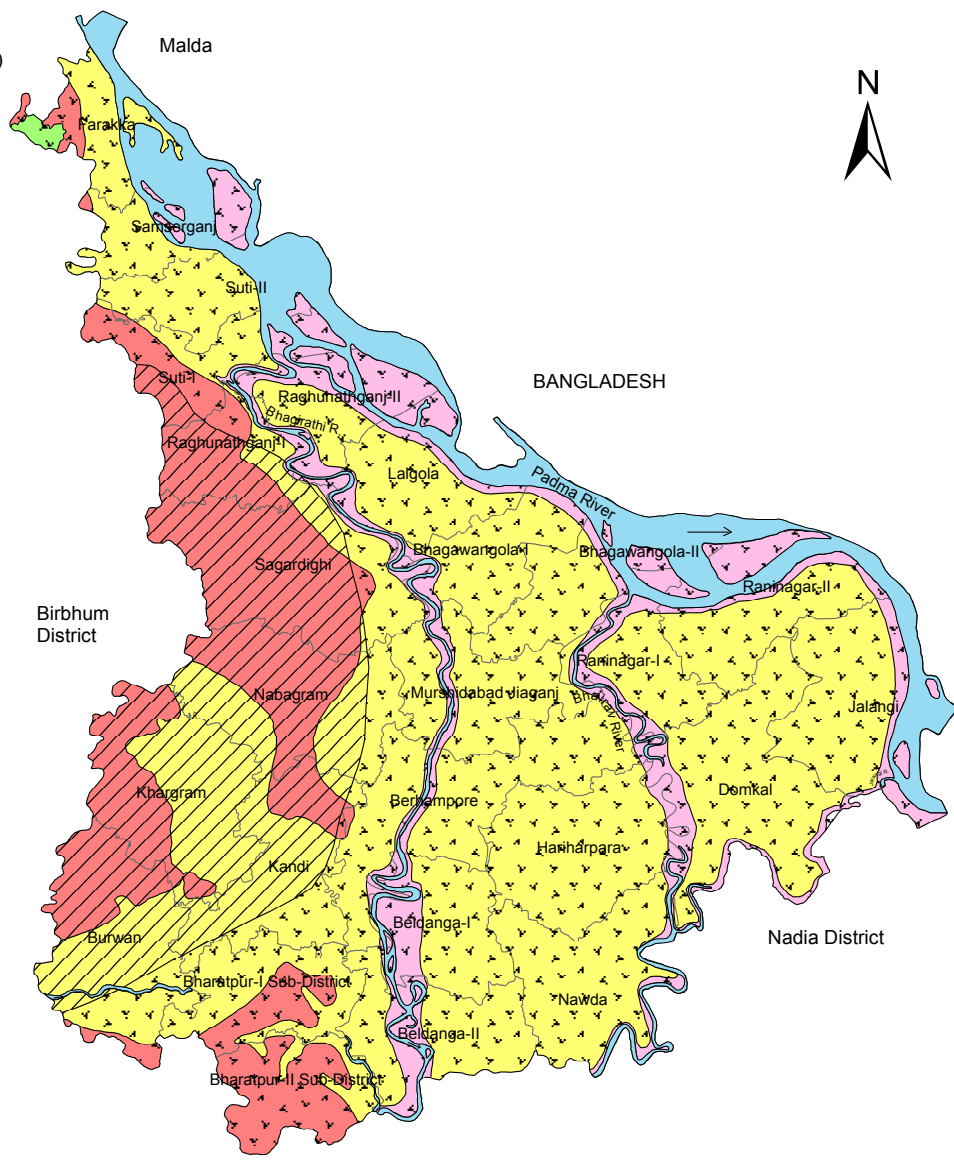


# DISTRICT MURSHIDABAD HYDROGEOLOGICAL MAP



## Legend

- River
- District Boundary
- Block Boundary

## Rock Type

- Fine sand, silt and clay
- Alternating layers of sand, silt and clay
- Hard clays impregnated with caliche nodules
- Rajmahal trap

Projection & Geodetic Reference System: GCS, WGS 1984

Symbol	Rock Type	Age	Lithology	Aquifer Description	Hydrogeology
	Sand, silt and hard clays impregnated with caliche nodules	Late Pleistocene to Late Holocene	Semi-consolidated deltaic alluvium, ferruginous concretion, lithomarge clay gravels, pebbles, cobbles etc., high permeability	Fairly thick but discontinuous aquifers	Moderate to large yield prospect 50-150 cum/hr and above
	Rajmahal basalt, sand, silt, fine-soft clays and hard clays impregnated with caliche nodules	Jurassic to Late Holocene	Unconsolidated fine sand and sandy silt, high permeability, low permeability at only northern plateau basalt	Fairly thick regionally extensive confined/unconfined aquifers down to 3000m	Moderate to large yield prospect 50-150 cum/hr and above

Reference: CGWB & GSI